

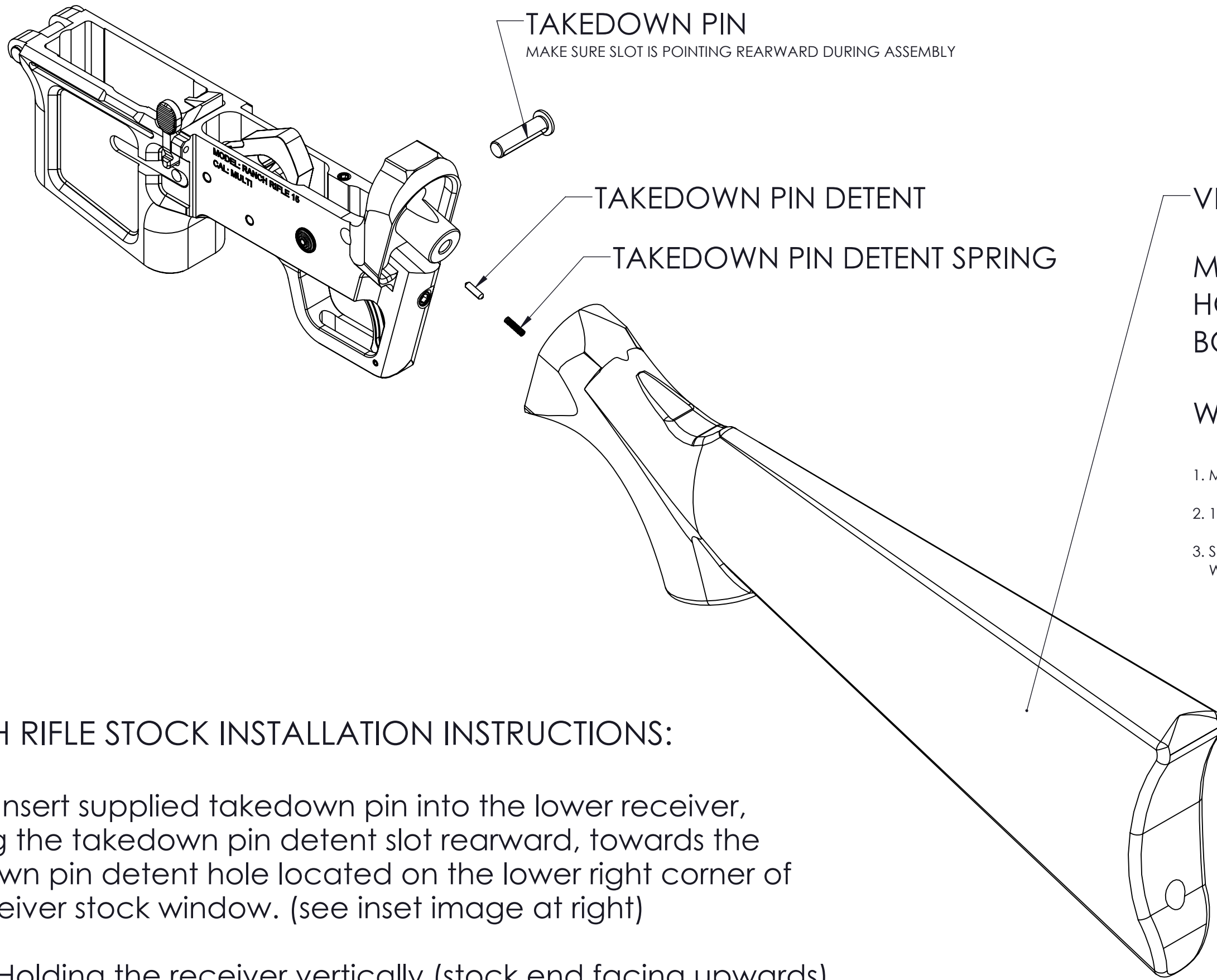
4

3

2

1

REV.	DESCRIPTION	DATE	APPROVED
A	PRELIMINARY RELEASE	10/25/2023	A. TROUT



VERIFIED COMPATIBLE 870 STOCK OPTIONS:

- MAGPUL SGA 870 STOCK ¹
- HOGUE OVERMOLDED 870 STOCK ²
- BOYD'S AMERICAN PLAINSMAN & FIELD DESIGN 870 STOCK ³

WILL UPDATE LIST AS TESTING CONTINUES.

- 1. MUST BE 870 VERSION, NOT COMPATIBLE WITH 500/590
- 2. 12 GAUGE VERSION
- 3. SLIGHT MODIFICATION TO STOCKS MAY BE REQUIRED FOR FITMENT. WOOD STOCKS IN PARTICULAR MAY VARY.

RANCH RIFLE STOCK INSTALLATION INSTRUCTIONS:

STEP 1: Insert supplied takedown pin into the lower receiver, aligning the takedown pin detent slot rearward, towards the takedown pin detent hole located on the lower right corner of the receiver stock window. (see inset image at right)

STEP 2: Holding the receiver vertically (stock end facing upwards), insert the detent first and then the spring into the takedown pin detent hole.

STEP 3: Follow stock installation instructions provided by chosen stock manufacturer i.e. Magpul, Hogue, Boyds, etc.

STEP 4: Function check takedown pin before completing stock install to ensure proper alignment of detent in the takedown pin slot.

NOTE: Stocks are intended to snug up and bite into the lower receiver as the stock hardware is tightened, however some fitting may be required on wood stocks, which may vary.

If you have any questions, or recommendations, please reach out to our customer service team at info@fm-products.com

UNLESS OTHERWISE SPECIFIED
DIMENSIONS ARE IN INCHES
TOLERANCES:
ANGULAR: ±1°
TWO PLACE DECIMAL ±.01
THREE PLACE DECIMAL ±.005
PROPRIETARY & CONFIDENTIAL
THE INFORMATION CONTAINED IN
THIS DRAWING IS THE SOLE
PROPERTY OF FOXTROT MIKE
PRODUCTS. ANY REPRODUCTION IN
PART OR AS A WHOLE WITHOUT THE
WRITTEN PERMISSION OF FOXTROT
MIKE PRODUCTS IS PROHIBITED.



FOXTROT MIKE PRODUCTS
9700 WEST BETHEL COURT
BOISE, ID 83709

TITLE: RANCH RIFLE STOCK INSTALLATION INSTRUCTIONS		REV: A
SIZE: C	DWG. NO.: 2310017	
DO NOT SCALE DRAWING	SCALE: 1:4	WEIGHT: SHEET 1 OF 1

4

3

2

1